



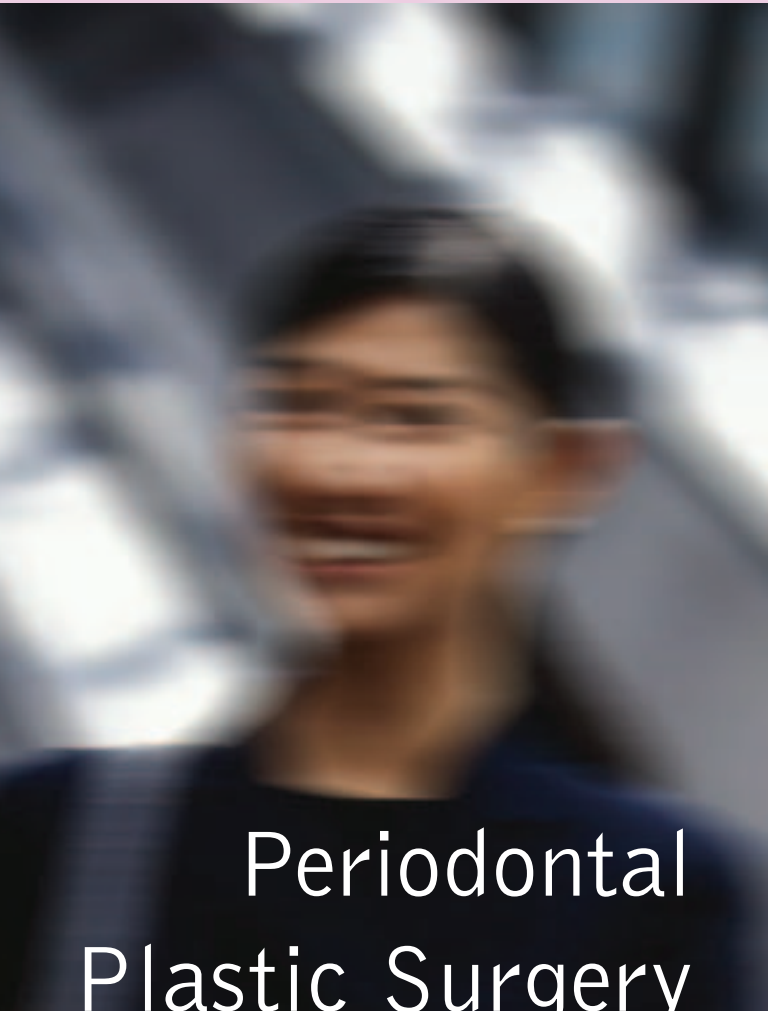
The American Academy of Periodontology  
737 N. Michigan Avenue, Suite 800  
Chicago, IL 60611-2690  
[www.perio.org](http://www.perio.org)

©2002 The American Academy of Periodontology



Ridge

Augmentation



Periodontal  
Plastic Surgery

Framework for the Perfect Smile

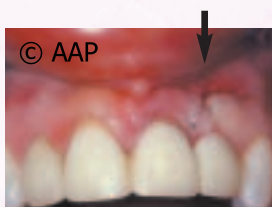
---

Ridge augmentation procedures are used to correct concavities in the jawbone where natural teeth are missing.

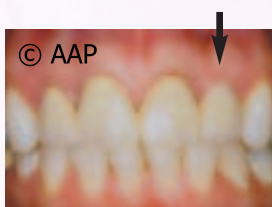


### Asymmetrical Bridge

This patient had a fixed bridge and one of the teeth became asymmetrical due to a concavity of his jawbone.



A connective tissue ridge augmentation procedure was performed to repair the concavity.



Ridge augmentation builds up the jawbone, giving the fixed bridge a more natural look.

Photos by CL Townsend, D.D.S. and S Carstensen, D.D.S.

## Reasons for Ridge Augmentation

Ridge augmentation corrects depressions in your gum line that are unnatural looking and sometimes make you seem older than you really are. It is also used to prevent the jawbone from collapsing following tooth extraction, and helps to even out replacement teeth that may seem too long compared to adjacent teeth.



### Ridge Deficiency

This patient has a significant gum deficiency and the adjacent teeth have porcelain extensions to create symmetry with the abnormally long two front teeth.



A new bridge with completely revised teeth lengths after ridge augmentation created a much enhanced gum profile.

Photos by CL Townsend, D.D.S.

